

65 Cleaner & Degreaser

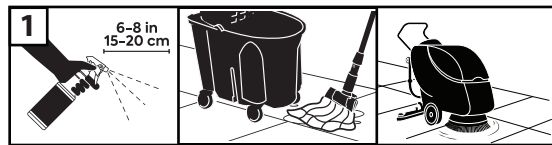
Heavy-duty cleaner and degreaser designed to meet your toughest cleaning challenges.

Coastwide Professional™ 65 Cleaner & Degreaser is a highly concentrated versatile product that is safer than conventional degreasers. It is formulated without harsh solvents or alkali and can be used on most surfaces not harmed by water.

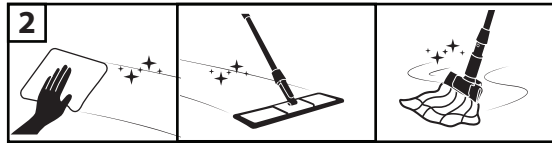
Features

- Concentrated to reduce waste and lower end-use costs
- Less than 0.1% VOC content
- Safe for metals and glass surfaces
- Effective on both oil- and water-based soils
- Does not leave sticky or soapy residue
- Versatile formulation cleans nearly any surface not harmed by water
- Low odor makes it pleasant to use
- Meets Green Seal™ GS-37 performance standards
- Meets EPA Safer Choice product standard
- NSF Nonfood Compounds Program Listed (C1)

Directions

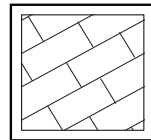


Apply cleaner to surface.

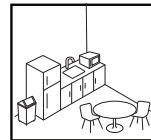


Wipe, mop, or scrub away soils.

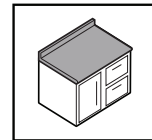
Use On:



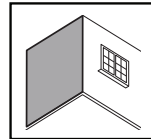
Floors



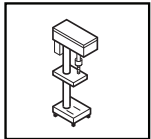
Breakrooms



Countertops



Walls



Equipment

COASTWIDE PROFESSIONAL™

Attributes

Physical form:	Clear, green liquid
Odor:	Citrus
pH concentrated:	6.5–8.5
pH diluted (1:128):	7.0–8.0
Dilution ratio:	1 : 128
Foam level:	Low
Concentrated:	Reduces package waste
Phosphates:	None
Shelf life:	2 years minimum in unopened container

These specifications were correct at the time of printing but are subject to change without notice.

Express Mix™ CW065EM03-A



3.25 liter, 2 units/case
1 ct yields 111, 2ct yields 221
ready-to-use gallons

1 Gallon CW065CN01-A



1 gallon, 4 units/case
1ct yields 129, 4 ct yields 516
ready-to-use gallons

55 Gallon Drum CW065CN55-A



55 gal drum
Yields 7,095 ready-to-use gallons

Supporting items:



Secondary Label: CW065SL00-A
Secondary Bottle: CW065SB00-A

To Purchase visit coastwideprofessional.com or contact your sales rep.



This product contains ingredients with more positive health and environmental characteristics than conventional cleaners. Learn more at epa.gov/saferchoice. EPA/Safer Choice recognition does not constitute endorsement of this product. The Safer Choice logo signifies that the product's formula, as Coastwide Professional has represented it to the EPA, contains ingredients with more positive human health and environmental characteristics than conventional products of the same type. EPA/Safer Choice relies solely on Coastwide Professional, its integrity and good faith, for information on the product's composition, ingredients and attributes. EPA/Safer Choice has not independently identified, that is, via chemical analysis, the ingredients in the product formula, nor evaluated any of Coastwide Professional's non-ingredient claims. EPA/Safer Choice provides its evaluation only as to the product's human health and environmental characteristics, as specified in the Standard and based on currently available information and scientific understanding.



This product meets Green Seal™ Standard GS-37 based on effective performance, concentrated volume, minimized/recycled packaging and protective limits on: VOCs and human and environmental toxicity. Learn more at GreenSeal.org.



This product meets applicable NSF Nonfood Compound Registration Guidelines for use in non-processing areas of food establishments. Learn more at nsf.com.



All plastic containers used in packaging products display the Society of Plastics Industries' 3-side triangular arrow to make recycling easier. The majority of our containers are readily recyclable and classified as 2-HDPE (High-Density Polyethylene) and some contain 25% post-consumer recycled plastic.