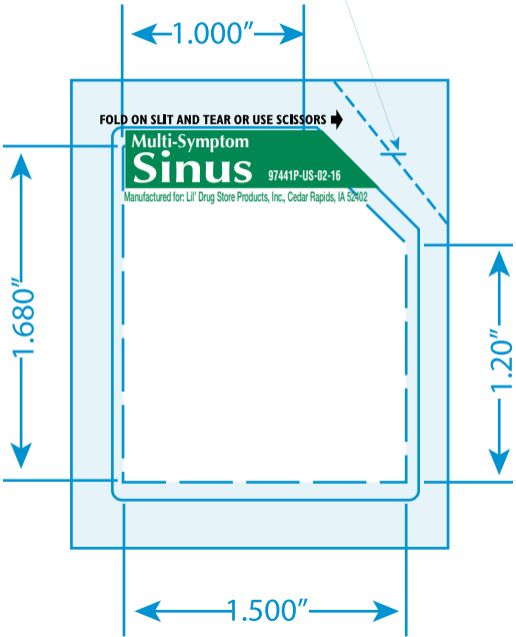


1/8" TEAR NOTCH



1/8" TEAR - NOTCH

← 1.000" →

FOLD ON SLIT AND TEAR OR USE SCISSORS ➔

Active ingredients (in each tablet)

Acetaminophen 325 mg	Pain reliever
Guaifenesin 200 mg.....	Expectorant
Phenylephrine HCl 5 mg.....	Nasal decongestant

Uses ■ For the temporary relief of: ◦ sinus congestion and pressure ◦ nasal congestion ◦ headache ◦ minor aches and pains ■ helps loosen phlegm (mucus) and thin bronchial secretions to make coughs more productive

■ temporarily relieves nasal congestion due to the common cold, hay fever and other upper respiratory allergies **Warnings** Liver warning: This product contains acetaminophen. Severe liver damage may occur if you take: ■ more than 4,000 mg of acetaminophen in 24 hours ■ with other drugs containing acetaminophen

■ 3 or more alcoholic drinks every day while using this product. **Allergy alert:** Acetaminophen may cause severe skin reactions. Symptoms may include: ■ skin reddening ■ blisters ■ rash If a skin reaction occurs, stop use and seek medical help right away. **Do not use** ■ with any other drug containing acetaminophen (prescription or nonprescription). If you are not sure whether a drug contains acetaminophen, ask a doctor or pharmacist. ■ if you are now taking a prescription monoamine oxidase inhibitor (MAOI) (certain drugs for depression, psychiatric or emotional conditions, or Parkinson's disease), or for 2 weeks after stopping the MAOI drug. If you do not know if your prescription drug contains an MAOI, ask a doctor or pharmacist before taking this product. **Ask a doctor before use if you have** ■ liver disease ■ heart disease

■ 3 or more alcoholic drinks every day while using this product. **Allergy alert:** Acetaminophen may cause severe skin reactions. Symptoms may include: ■ skin reddening ■ blisters ■ rash If a skin reaction occurs, stop use and seek medical help right away. **Do not use** ■ with any other drug containing acetaminophen (prescription or nonprescription). If you are not sure whether a drug contains acetaminophen, ask a doctor or pharmacist. ■ if you are now taking a prescription monoamine oxidase inhibitor (MAOI) (certain drugs for depression, psychiatric or emotional conditions, or Parkinson's disease), or for 2 weeks after stopping the MAOI drug. If you do not know if your prescription drug contains an MAOI, ask a doctor or pharmacist before taking this product. **Ask a doctor before use if you have** ■ liver disease ■ heart disease

■ 3 or more alcoholic drinks every day while using this product. **Allergy alert:** Acetaminophen may cause severe skin reactions. Symptoms may include: ■ skin reddening ■ blisters ■ rash If a skin reaction occurs, stop use and seek medical help right away. **Do not use** ■ with any other drug containing acetaminophen (prescription or nonprescription). If you are not sure whether a drug contains acetaminophen, ask a doctor or pharmacist. ■ if you are now taking a prescription monoamine oxidase inhibitor (MAOI) (certain drugs for depression, psychiatric or emotional conditions, or Parkinson's disease), or for 2 weeks after stopping the MAOI drug. If you do not know if your prescription drug contains an MAOI, ask a doctor or pharmacist before taking this product. **Ask a doctor before use if you have** ■ liver disease ■ heart disease

■ 3 or more alcoholic drinks every day while using this product. **Allergy alert:** Acetaminophen may cause severe skin reactions. Symptoms may include: ■ skin reddening ■ blisters ■ rash If a skin reaction occurs, stop use and seek medical help right away. **Do not use** ■ with any other drug containing acetaminophen (prescription or nonprescription). If you are not sure whether a drug contains acetaminophen, ask a doctor or pharmacist. ■ if you are now taking a prescription monoamine oxidase inhibitor (MAOI) (certain drugs for depression, psychiatric or emotional conditions, or Parkinson's disease), or for 2 weeks after stopping the MAOI drug. If you do not know if your prescription drug contains an MAOI, ask a doctor or pharmacist before taking this product. **Ask a doctor before use if you have** ■ liver disease ■ heart disease

■ 3 or more alcoholic drinks every day while using this product. **Allergy alert:** Acetaminophen may cause severe skin reactions. Symptoms may include: ■ skin reddening ■ blisters ■ rash If a skin reaction occurs, stop use and seek medical help right away. **Do not use** ■ with any other drug containing acetaminophen (prescription or nonprescription). If you are not sure whether a drug contains acetaminophen, ask a doctor or pharmacist. ■ if you are now taking a prescription monoamine oxidase inhibitor (MAOI) (certain drugs for depression, psychiatric or emotional conditions, or Parkinson's disease), or for 2 weeks after stopping the MAOI drug. If you do not know if your prescription drug contains an MAOI, ask a doctor or pharmacist before taking this product. **Ask a doctor before use if you have** ■ liver disease ■ heart disease

■ 3 or more alcoholic drinks every day while using this product. **Allergy alert:** Acetaminophen may cause severe skin reactions. Symptoms may include: ■ skin reddening ■ blisters ■ rash If a skin reaction occurs, stop use and seek medical help right away. **Do not use** ■ with any other drug containing acetaminophen (prescription or nonprescription). If you are not sure whether a drug contains acetaminophen, ask a doctor or pharmacist. ■ if you are now taking a prescription monoamine oxidase inhibitor (MAOI) (certain drugs for depression, psychiatric or emotional conditions, or Parkinson's disease), or for 2 weeks after stopping the MAOI drug. If you do not know if your prescription drug contains an MAOI, ask a doctor or pharmacist before taking this product. **Ask a doctor before use if you have** ■ liver disease ■ heart disease

■ 3 or more alcoholic drinks every day while using this product. **Allergy alert:** Acetaminophen may cause severe skin reactions. Symptoms may include: ■ skin reddening ■ blisters ■ rash If a skin reaction occurs, stop use and seek medical help right away. **Do not use** ■ with any other drug containing acetaminophen (prescription or nonprescription). If you are not sure whether a drug contains acetaminophen, ask a doctor or pharmacist. ■ if you are now taking a prescription monoamine oxidase inhibitor (MAOI) (certain drugs for depression, psychiatric or emotional conditions, or Parkinson's disease), or for 2 weeks after stopping the MAOI drug. If you do not know if your prescription drug contains an MAOI, ask a doctor or pharmacist before taking this product. **Ask a doctor before use if you have** ■ liver disease ■ heart disease

↑ 1.680" ↓

↑ 1.20" ↓

← 1.500" →

