

# GUANGXI AGAWO NEW ENERGY TECHNOLGY CO.,LTD



.....  
LR44/ AG13 / L1154

## Alkaline zinc-manganese button battery Technical specifications

Compile:

Approve:

Date: 2022-01-10

Specification number: Crown-LR44

.....  
Company address: No. 3 Plant, Second Phase of High-tech Industrial Development Zone,  
Qinzhou City, Guangxi

Contact number: 0777-5686555 13556395895

Fax : 0754-5684555

Web site : WWW.AGAWO.COM

Email : 2881007099@qq.com  
.....

( The technical specifications are subject to change without prior notice )

## 1、 Profile

This specification applies to L1154 alkaline Zinc-Mn buckle battery produced by our company.

### 1.1 Model

Our factory  
LR44

OTHER  
AG13、 L1154、 V13GA、 392A

### 1.2 Reference standard

IEC60086-1(2015)---primary Batteries-Part 1:General

IEC60086-2(2015)---primary Batteries-Part 2:Physical and Electrical Specification

IEC60086-5(2015)---primary Batteries-Part 5:Safety of batteries with aqueous electrolyte

## 2、 Chemical composition system:

Alkaline zinc manganese (－) Zn/KOH/MnO<sub>2</sub> (＋)

## 3、 Nominal voltage: 1.5V

## 4、 Average weight: about 2.0g

## 5、 nominal capacity::

140mA /h (20±2℃ with 6.5K Ω The continuous discharge termination voltage of the resistance is 0.9V)

## 6、 Electrical performance

(Conditions: load resistance 6.5K Ω, accuracy ± 0.5%, test time 0.3s, ambient temperature 20 ± 2 °C, test within 30 days after receipt.)

| Battery type                   | No-load voltage (V) | Load voltage (V) | Inspection standard                     |
|--------------------------------|---------------------|------------------|---|
| New electricity                | 1.53                | 1.52             | MIL-STD-105E,<br>MIL-STD-105E, ordinary |
| Room temperature for 12 months | 1.52                | 1.51             | secondary sampling,<br>AQL=0.4          |

## 7、 Discharge performance

(Conditions: ambient temperature: 20±2℃, 30 days after receiving the test)

| Discharge project     | Discharge conditions |                        |                     | Min average discharge time |                                |
|-----------------------|----------------------|------------------------|---------------------|----------------------------|--------------------------------|
|                       | Discharge load       | Discharge time per day | Termination voltage | New electricity            | Room temperature for 12 months |
| IEC discharge items   | 6.8K Ω               | 24H                    | 1.2                 | 700h                       | 640h                           |
| Plant discharge items | 1000 Ω               | 24H                    | 0.9                 | 100h                       | 90h                            |

## 8、Leak resistance performance

| Project                              | Conditions  | Time | Features   | Acceptance criteria |
|--------------------------------------|---|------|--|---------------------|
| Constant temperature & humidity test | High temperature 60 degrees and wet the degree of 97% | 48H  | No visible rust, leakage, N=30, AC=0, Explosive conditions. RE=1                                 | N=30, AC=0, RE=1    |
| Over discharge test                  | 6.5KΩ put in a row electricity                        | 48H  | Battery deformation does not exceed the battery Size upper limit of 0.2mm, no leakage, explosion | N=30, AC=0, RE=1    |

## 9、Safety features

| Project            | Conditions                              | Time | Features                 | Acceptance criteria |
|--------------------|---|------|--------------------------|---------------------|
| Short circuit test | Temperature: $20 \pm 2^{\circ}\text{C}$ | 24H  | Battery does not explode | N=30, AC=0, RE=1    |

## 10、Mark:

In the battery labeled with the content:

1、Model: LR44

2、Manufact:  **AGW**

3、Nominal voltage: 1.5V

4、Polarity identificatio: “+”

5、Battery name: 0.% Hg.Pb CELL

## 11、Precautions

- 1、Do not short-circuit or charge the disposable battery, which may cause the battery leakage to the risk of explosion.
- 2、The new battery should not be mixed with the used battery; Different electrochemical systems, types, brands of batteries should not be mixed.
- 3、do not use fire to destroy the battery, can not remove the battery.
- 4、Please keep the battery in the baby's hands out of reach, so as not to accidentally eat, swallow the battery should go to the hospital immediately.

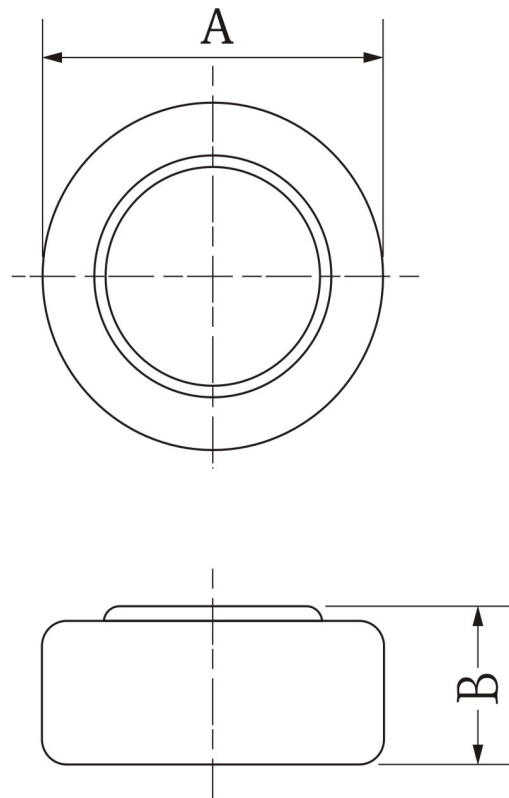
12、Battery storage period : At room temperature (15-25°C)

13、Battery size diagram : (Attached Figure 2)

14、Battery structure diagram: (Attached Figure 3)

15、Electrode materia :  
 Negative: zinc powder clip  
 Positive: iron sheet coated with indium

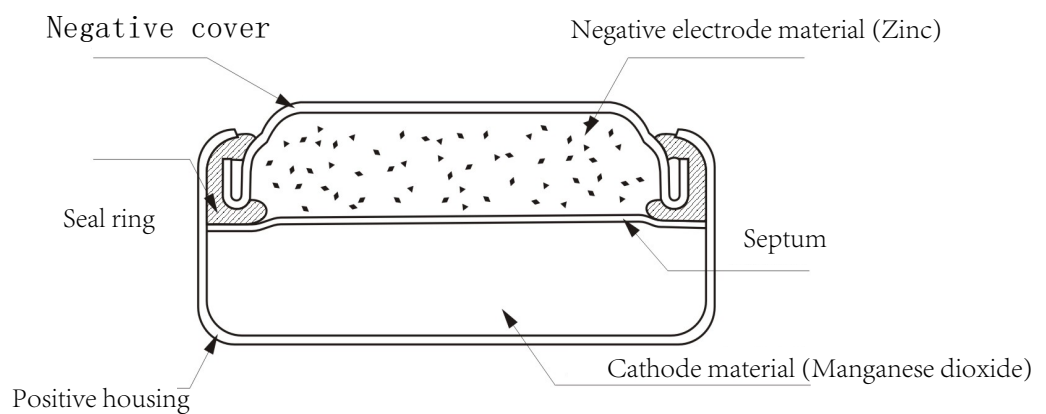
## Appearance and size diagram:



| Size | Specifications |
|------|----------------|
| A    | 11.6+ 0-0.25   |
| B    | 5.4+ 0-0.30    |

(Attached Figure 2)

## Structure:



(Attached Figure 3)