

# LOCTITE®

## SUPER GLUE

### Ultra GEL CONTROL.

- ▶ No drip or run
- ▶ Impact & water resistant
- ▶ Flexible

Ceramic  
Leather  
Rubber  
PVC  
Metal  
Wood  
Most Plastics



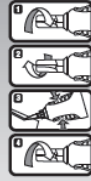
4g

Henkel

# LOCTITE® ULTRAGEL® CONTROL®

## SUPER GLUE

Our most durable Super Glue. UltraGel® provides a strong bond ideal for repairs or products subject to daily use, harsher conditions, or impact and vibration. The control applicator allows pinpoint application without a sticky mess.



Protect work area at all times. Surfaces should be clean, dry and close fitting.

- 1 To puncture nozzle, turn cap clockwise until clicking sound stops.
- 2 Unscrew cap counterclockwise.
- 3 Squeeze side grips for precision dispensing. Apply sparingly to one surface. Press parts together and hold for 15-30 seconds.
- 4 Replace cap. Leave undisturbed for 10 minutes. Full cure in 12-24 hours.

Henkel Corporation  
One Henkel Way  
Rocky Hill, CT, 06067

Made in Ireland / Packaged in the U.S.A.  
Conforms to ASTM D4236  
©Henkel Corporation  
2018/3065414

**NOTE:** Not suitable for polystyrene foam, foam rubber, glass, bone china, polyethylene and polypropylene. Bonded items should not be placed in oven, microwave or dishwasher. **Fingers bonded?** Apply cooking oil to bonded area of skin. Gently massage bonded fingers back and forth to "peel" bond apart. Using rolling, peeling motion—do not pull.

**WARNING!** Contains Cyanoacrylate. Can cause severe eye injury. Bonds skin instantly. Skin contact may cause burns. Harmful if swallowed. May cause allergic skin reaction. May cause delayed irritation and sensitization. Use in a well ventilated area. Avoid contact with eyes, skin and clothing. **DO NOT TAKE INTERNALLY.** Wash thoroughly after handling. **FIRST AID:** In case of eye contact, flush with water for 15 minutes, call a physician. For skin contact, flush with water. For ingestion, do not induce vomiting, call a physician. If spilled on clothing, flush with large quantities of water. **KEEP OUT OF THE REACH OF CHILDREN.**

⚠ **WARNING!** Reproductive harm — [www.P65Warnings.ca.gov](http://www.P65Warnings.ca.gov).

1-800-624-7767  
9:00 am - 4:00 pm EST, Monday-Friday  
Largo, Mexico  
800 am - 4:00 pm Mexico City time

[www.loctiteproducts.com](http://www.loctiteproducts.com)

